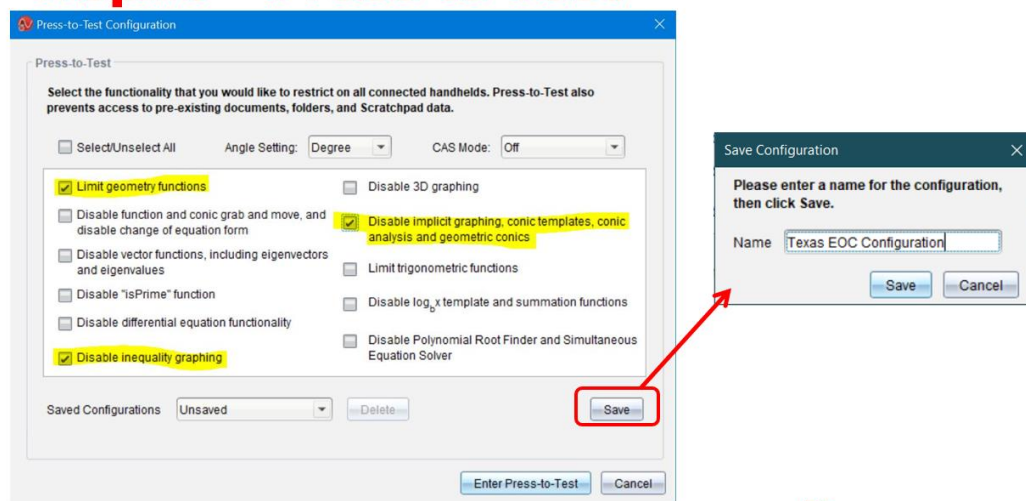


Preparing the TI Nspire CX & CX II for Testing

In order for the TI Nspire CX & CX II handhelds are in compliance for STAAR testing in Texas, the handhelds must be placed in “Press-to-Test” mode and three features must be disabled. The features that must be disabled are the following (see screenshot below) :

- Geometry Functions
- Inequality Graphing
- Implicit Graphing

Nspire – Press-to-Test



A helpful [PDF Guide](#) on how to place the TI Nspire CX & CX II in Press-to-Test mode can be found [HERE](#).

Or if you'd prefer to watch a short video on how to do this, please click on the appropriate link below.

- [Press-to-Test Mode - TI Nspire CX](#)
- [Press-to-Test Mode – TI Nspire CX II](#)

Please feel free to reach out if you have questions or need additional guidance.

Regards,

Marco A. Gonzalez

Texas Instruments, Inc.

Education Technology Consultant

956-459-3831 | mgonzalez1@ti.com | education.ti.com

Texas Instruments, 13532 N. Central Expressway, Dallas, Texas 75243 | 1.800.TI.CARES | VISIT: education.ti.com |

© [Copyright](#) 2021 Texas Instruments Incorporated. All rights reserved. | [Privacy Policy](#) | [Unsubscribe](#)

